

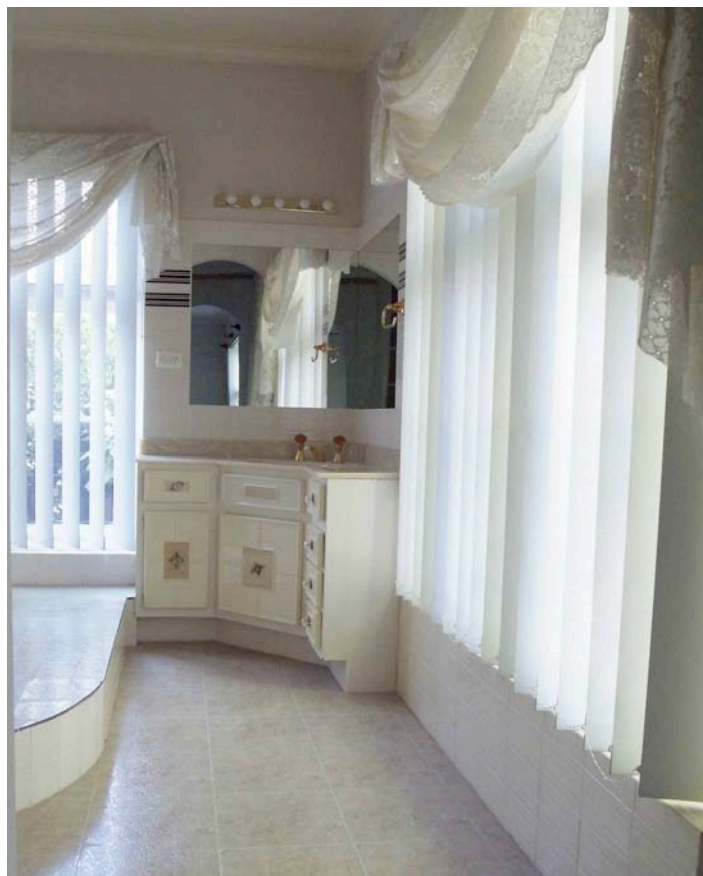
Ensuite



A major renovation of this 80's salmon coloured ensuite, was the first thing on the "to do" list when this family moved into their new home. Everything about the room was not functional.



A large, round, in-ground bath over-took the floor - and there was no shower! As this room is the master ensuite, the shower is a priority.



The two large windows were also a hindrance for the flexibility of the floorplan, making it almost impossible to create a bathroom that was going to accommodate all the clients' needs, so the bath and one of the windows had to go!

For the feel and look, the owners wanted a "country retreat" feel to give them a sense of luxury, with warmth and character.



A custom dresser was designed to match the double bowl vanity using the same Carrera marble and timber stain, to look as though they were brought in together.

It is important to create consistency with such a small room.

As the space was tight there wasn't much room for storage so this tower was created with three specific purposes.



Hidden behind these mirror doors is a powerpoint to have the hair dryer and straightener ready to go and all the owner's make-up and needs for "getting ready" on a daily basis.



This double drawer was created to store bulky items like toilet paper and extra towels and its third use is to give a private area for the toilet and make it hidden when you first walk into the room.



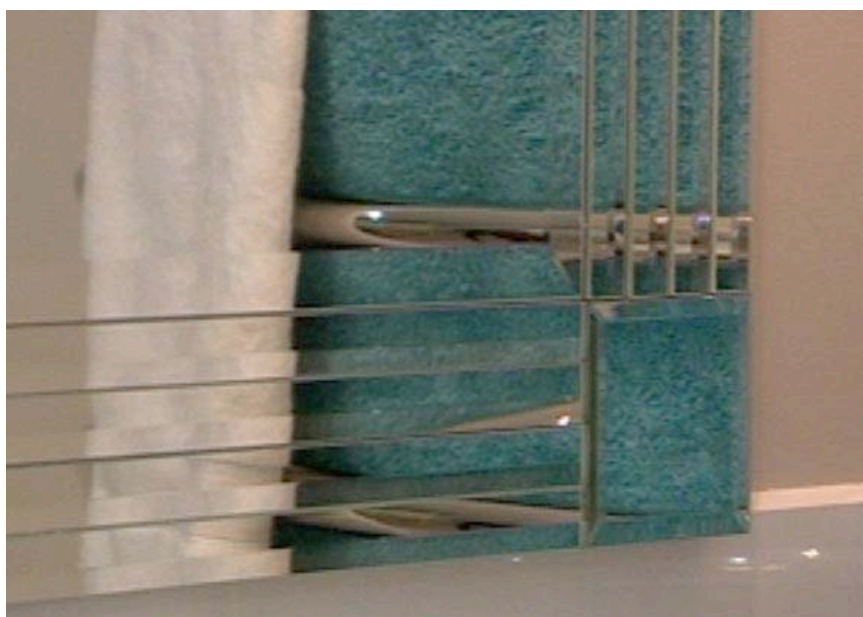


And what's a luxury bathroom without a twin showerhead and rose.

We kept the shower surround as a semi-frameless to reduce the amount of chrome detail, but also to keep as much water within the shower area.



As one window was removed I wanted to keep as much light as possible so I went for this large beveled mirror to reflect light and also add a sense of character to the room.



The distinct lines induce an art deco element, which gives a contrast to the depth of the timber and marble.



But my favourite addition is the black wallpaper.



It is a bit of high drama, but an element I wanted to introduce, so the area wasn't in fear of becoming a stark and cold bathroom.

And the final touch to complete the look are these moisture resistant shutters.

